

2022 Annual Report
**A DIVERSE APPROACH
TO COMMUNITY CARE**



Table of Contents

02

From RHD'S CEO

03

About Us

04

What We Do

05-09

Behavioral Health

12-22

Intellectual & Developmental Disabilities

25-28

Our Donors

Follow Us



Resources4hd



ResourcesHD



Resources for Human Development

10-11

Integrated Health Care

23-24

Special Events

Want to stay updated with RHD news, events, and updates?
Subscribe to our monthly newsletter, RHD Connections.



Scan QR code to subscribe.

From RHD's CEO

At the core of RHD resides a resounding sense of “community,” which is the theme of this year’s annual report. Whether as a participant, front-line program staff, or administrative team member, the shared experience of community drives everything we do. RHD’s culture embraces diversity and inclusion, creativity, and multi-level thinking, defining our path forward and resulting in positive outcomes. Our accomplishments in 2022 include the creation of the “Together We’re Better” grant, support of local innovation, commitment to technology—including electronic health records—and a more easily navigable intranet. As a result, RHD provided care and resources to approximately 30,000 individuals across 13 states in 2022! These positive outcomes and the successes we share below would not have been possible without your ongoing support of our mission and the work we do for the community at large.

In 2022, we took steps toward creating an even more inclusive community by expanding our Eradicate Hate initiative to address racial aggression against RHD staff at programs. For the first time in our history, we saw representation from every RHD state at our highly regarded trauma-informed care speaker series. These educational and inspirational discussions were created to broaden our thinking and challenge previously held beliefs—they are truly amazing!

RHD programs across the country achieved significant progress within their communities throughout the year. Live Yes Studios, an arts-centered day program for adults with intellectual and developmental disabilities in Lincoln, NE, met an exceptional milestone during Give to Lincoln Day in 2022. In New Orleans, LA, RHD initiated a collaboration with the city’s health department to develop the New Orleans Mobile Crisis Intervention Unit. This pioneering program aims to transform emergency care by seamlessly linking individuals in distress with a specialized crisis team through a 911 call.

RHD’s flagship nurse-managed network of federally qualified community health centers, Family Practice and Counseling Network, celebrated 30 years in 2022! Another transformative program, RHD’s Morris Home, the nation’s only residential recovery program for transgender and nonbinary individuals, moved to a larger facility with state-of-the-art therapy rooms.

On behalf of all the people we support, we are extremely grateful for the work we have done together over this past year. We look forward to continued growth and collaboration with our partners – like you. Thank you for being a part of our community. **Together, we’re better!**

Marco Giordano
Chief Executive Officer



RHD'S BOARD OF DIRECTORS

Diane Menio, M.S., Chairperson
Marvin Levine, Vice Chairperson
Brian Matthew Rhodes, Esq.
Caryn Reichlin Johnson, M.S., OTR/L, FAOTA
Diane Sydney Rivers
Eldron Blackwell, C.P.A.
JoAnn E. Connelly, M.S.W.
Michael Denomme, Ph.D., M.S.W.
Nikki Bagby
Sheldon Steinberg, V.M.D.
Terry Soulé, M.S.
Thomas E. Owens, DSW
Tracey Vause Earland, Ph.D., OTR/L, FNAP



Visit tinyurl.com/rhdexecutiveteam
or scan the QR code for a complete
list of our executive team.

RHD's Community in 2022

About Us

Resources for Human Development (RHD) is a national, comprehensive human services organization with a mission to provide caring, effective, and innovative services that empower individuals as they work to achieve the highest level of independence possible and build better lives for themselves, their families, and their communities.

RHD operates 130 programs in 13 states, serving more than 28,800 annually. Our programs specialize in helping individuals and families with complex needs, such as mental illnesses, developmental disabilities, chronic homelessness, substance abuse, post-traumatic stress, physical/emotional abuse, and more. Our wide spectrum of services covers housing, healthcare, education, community development, job training, career counseling, social services, addiction counseling, creative arts therapies, and peer support to veterans transitioning back to civilian life.

13 STATES

- Connecticut
- Delaware
- Florida
- Iowa
- Louisiana
- Massachusetts
- Missouri
- Nebraska
- New Jersey
- North Carolina
- Pennsylvania
- South Dakota
- Tennessee

AREAS OF EXPERTISE



Intellectual & Developmental Disabilities



Behavioral Health



Integrated Health Care



School-Based & Children's Services



Supportive Housing

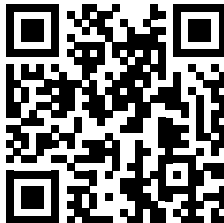


Drug & Alcohol Recovery



Arts & Culture

To view a full list of our programs visit www.rhd.org/our-programs or scan the QR code.



EMPLOYEES >4,000

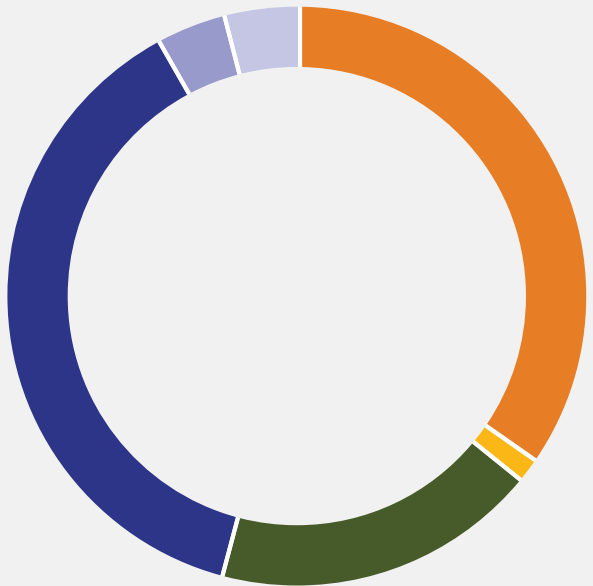


What We Do

2022 ANNUAL REVENUE

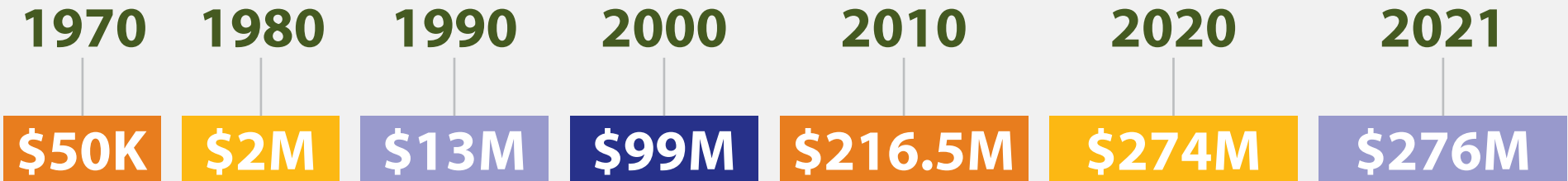
\$289 million

REVENUE BY SOURCE



Federal, Other State, & Local	\$101,288,907
Grants, Donations, Interest, & Miscellaneous	\$3,955,966
Managed Care	\$54,280,790
Medicaid	\$110,739,664
Pharmacy	\$11,256,131
Patient & Client Fees	\$12,000,984

PAST ANNUAL REVENUE



Highlights from RHD’s BHH Division



Community has served as an essential function in RHD’s journey since its inception in 1970. As we consistently push the boundaries of innovation in behavioral health services, RHD always prioritizes building authentic connections with individuals first. By valuing their voices, experiences, and feedback, we create a sense of ownership and belonging, making people feel truly seen and heard. RHD’s 88 BHH programs in seven states—including closely supervised housing, therapy, counseling, and art programs—foster healing and empower individuals of all ages. By dismantling barriers to independent living, RHD strengthens and unifies the community as a whole. We are proud to serve as a national nonprofit that challenges the status quo, embraces recovery, and emphasizes the betterment of all.

Morris Home

RHD’s Morris Home is a unique program. It’s the only residential recovery facility in the country that provides support for transgender and nonbinary individuals in a gender-affirming and inclusive environment. The program focuses on developing their knowledge and skills to promote sobriety, manage emotional and behavioral difficulties, adopt safe and productive lifestyles, and foster healthy relationships with peers, family, and the community.

Morris Home experienced a groundbreaking year in 2022, as it strengthened both its own community and its role as an advocate for transgender rights in the Philadelphia community. In April 2022, Morris Home moved to its new location in West Philadelphia. The new facility has increased its capacity from nine to fourteen residents and implemented additional safety and security measures. The state-of-the-art complex includes a SMART (Sensory Motor Arousal Regulation Therapy) room equipped with various lighting options and tools for sensory, motor, sound, scent, and tactile stimulation during therapy sessions. The space is thoughtfully designed to cater to the specific needs of Morris Home’s participants and can accommodate additional individuals in need and staff.



14-PERSON CAPACITY



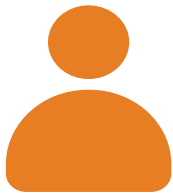
ELEVATED
SAFETY AND
SECURITY



INNOVATIVE
SENSORY
EXPERIENCE



THOUGHTFUL
DESIGN



TAILORED FOR
INDIVIDUAL NEEDS



ROOM
FOR GROWTH

On April 12, 2022, Morris Home held a ribbon-cutting and Grand Re-Opening ceremony. Program participants, local community members, the media, and RHD staff attended the event. Marco Giordano, RHD’s CEO, delivered a speech on behalf of the organization, while Naiymah Sanchez, Trans Rights Organizer for the American Civil Liberties Union, shared her personal journey and vision for the future.

Clothing retailer Anthropologie played a pivotal role in making the new Morris Home location and its amenities possible through their substantial donations. Anthropologie’s commitment to the cause extended further as they pledged a \$15,000 donation in June 2022, reaffirming their partnership with Morris Home during Pride Month.

On November 21, 2022, *The Philadelphia Inquirer* published a comprehensive article on Morris Home. Over a span of two years, the newspaper’s journalists spent time with participants and staff, capturing the community’s challenges, triumphs, and their strong sense of unity and shared experiences.

In 2022, Morris Home also forged stronger relationships with Philadelphia organizations—including The Mayor’s Office of LGBT Affairs and the William Way LGBT Community Center—dedicated to protecting and preserving the rights of LGBTQ+ individuals.



COVID Prevention Site

RHD's tireless efforts in supporting the homeless population throughout the challenges of the COVID-19 pandemic have reinforced our unwavering dedication to assisting vulnerable communities during prolonged periods of distress. On June 9, 2022, RHD was among the organizations honored by the Philadelphia Office of Homeless Services for our work serving the homeless during the pandemic. The ceremony was held at One Logan Square in Center City, Philadelphia.

RHD's COVID Prevention Site opened on July 2020, at the Holiday Inn Express in Center City. The following December, the site moved to a facility in North Philadelphia. The new temporary shelter provided 239 homeless individuals with a safe residence during the pandemic. As COVID-19 cases spiked, the site transitioned to the Isolation and Recovery Site. About 24 individuals who tested positive for COVID-19 were able to quarantine and recover. Additionally, RHD opened the Fernwood East program to shelter around 50 homeless women during the winter. The COVID Prevention Site closed on June 30, 2022.

RHD's Michele Rector, Nicole Sommerville, and Ashley Taylor received commendations during the ceremony for their work helping Philadelphia's homeless community during the pandemic.



Family House Norristown

Community is at the heart of Family House Norristown, a long-term residential treatment facility dedicated to supporting chemically dependent women, pregnant women, and their children. This unique program not only addresses addiction and parenting skills, but also emphasizes child prevention and intervention. By keeping the mother and children together, Family House ensures the family can recover and heal as a cohesive unit.

After a two-year hiatus, Family House Norristown celebrated its grand reopening in August 2022. Meticulous preparations, including updating licensing requirements, completing necessary renovations, and assembling a full staff, made the successful reopening of Family House Norristown possible. By resuming its crucial role as a long-term residential treatment facility, Family House Norristown reaffirmed its commitment to the well-being and recovery of individuals and families, while strengthening the bonds within the community it serves.



Homeless Health Initiative

RHD is continuously exploring innovative solutions and forging partnerships to address the root causes of homelessness to create lasting change. In September 2022, RHD launched the Homeless Health Initiative in Pennsylvania, a collaborative effort between three of RHD's programs that provide emergency shelter—Coordinated Homeless Outreach Center (CHOC), Woodstock Family Center, and Fernwood. This initiative aims to improve the health outcomes of individuals experiencing homelessness by establishing connections with community-based healthcare services and better utilizing their health plan benefits, such as dental and vision care.

People experiencing homelessness often face barriers to consistent primary care and may rely on emergency room visits for routine health issues. They may also be unaware of their health insurance status and available benefits. Additionally, Medicaid managed care organizations struggle to reach and assist these individuals. Studies have shown that homelessness is associated with higher rates of illness and premature death.

The Homeless Health Initiative, funded by Keystone First, addresses these challenges by collaborating and sharing information regarding participants' medical needs. A Clinical Coordinator works closely with shelter staff to guide participants through healthcare issues and connect them with appropriate care within the Keystone First network. Through taking a holistic approach, unnecessary emergency room visits can be avoided.

The Homeless Health Initiative supports the homeless community by tackling social, physical, and behavioral health challenges, fostering positive change, and creating brighter futures. RHD remains steadfast in its mission to provide ongoing support to homeless individuals and families.

New Orleans Mobile Crisis Intervention Unit

In September 2022, RHD officially initiated a collaboration with the New Orleans Health Department to change the state of emergency behavioral health response in New Orleans. RHD’s New Orleans Mobile Crisis Intervention Unit (MCIU) opened in June of 2023 and revolutionized emergency care by connecting individuals in distress with a specialized crisis team through a simple call to 911. Responding only to nonviolent calls, this extraordinary program will prioritize mental well-being and community care.

The MCIU’s genesis began in 2021 when the city’s health department sought innovative proposals to enhance emergency response. RHD’s proposal received the nod, thanks in part to prior experience with the city and emergency response to mental health and substance use crises. Working in teams of two, the MCIU pairs crisis workers with licensed clinical staff to provide multi-faceted care. Through groundbreaking approaches, they will provide on-site or virtual assistance, tailored to the unique requirements of each situation.

By redirecting cases from emergency rooms, EMS, and law enforcement, this program will minimize involuntary hospitalizations and arrests related to mental health. This will create a safer, healthier, and more compassionate New Orleans, benefiting everyone in the community.



Highlights from RHD’s Integrated Healthcare

In July of 2022, RHD’s Family Practice and Counseling Network (FPCN) proudly celebrated its 30th anniversary, marking three decades of dedicated service. Since its establishment in 1992, FPCN has grown into a network of health centers in Philadelphia, serving over 20,000 patients each year. At its core, FPCN embodies a commitment to community, providing vital healthcare services through a nurse-managed, integrated model that encompasses primary care, behavioral health, dental care, and preventative services. FPCN prioritizes the right of every individual to receive quality healthcare and recognizes the importance of working hand-in-hand with local residents. Their approach is grounded in cultural competence, trauma-informed care, and compassion, ensuring that patients receive the support they need in a manner that is respectful of their diverse backgrounds and experiences.

This deep-rooted dedication to community well-being has garnered recognition and support. On May 5, 2022, Congresswoman Mary Gay Scanlon (D-PA) received an award from the National Association of Community Health Centers for her support of Federally Qualified Health Centers (FQHC), including FPCN. She accepted the award and gave remarks at FPCN’s Health Annex in Southwest Philadelphia, highlighting the crucial role that locally based healthcare plays in fostering thriving neighborhoods. In September 2022, FPCN received \$500,000 from the Independence Blue Cross Foundation, the charitable arm of one of the largest health insurers in Southeastern



Highlights from RHD's IDD Division



Pennsylvania. The funds will be used to help staff FPCN's new Family Health and Birth Center. Set to open in 2024, this birthing center represents a unique and holistic approach to birthing and pediatric care by providing comprehensive services in a low-tech, high-touch, home-like setting. Midwives, doulas, and nurses will collaborate to ensure laboring women and parents receive exceptional care.

Recognizing the pressing need to address systemic racism, FPCN embarked on an antiracist strategic initiative in 2022. Their Anti-Racism Initiative work plan encompasses a range of goals, including nurturing self-awareness, changing operations and improving culture, furthering learning and development, fostering engagement, promoting cultural diversity, addressing collective trauma, and championing anti-racism efforts. FPCN also devised a Diversity, Equity and Inclusion strategic initiative, prioritizing talent management, employee experience, and an equitable culture. By actively cultivating an environment that is anti-racist, inclusive, and competent, FPCN strives to ensure their services meet the unique needs of their diverse community. This essential work involves comprehensive staff trainings on cultural awareness, policy revision and development, and clinical trainings on service delivery, embodying their commitment to providing the highest quality of care to all individuals they serve.

Learn more here: www.fpcn.com



RHD is devoted to building a sense of community and empowering individuals with intellectual and developmental disabilities (IDD). With 36 programs available across eight states in 2022, RHD consistently strives to provide innovative services that bring people together. These include creative arts therapies and the companion model, which promote independence and a more fulfilling life for individuals with IDD. By fostering inclusive, encouraging active participation, and emphasizing interpersonal engagement, RHD empowers individuals to contribute meaningfully to their communities and build strong relationships.

Live Yes Studios

Located in Lincoln, NE, Live Yes Studios (LYS) is a vibrant hub of artistic expression and inclusivity within the local community. As an alternative arts-based day program for adults with intellectual and developmental disabilities, LYS aims to dismantle societal barriers and cultivate an environment that values individuality. The community at LYS embraces and celebrates the unique abilities and talents each person brings to this open and creative space.



In 2022, Live Yes Studios (LYS) solidified its presence in the Lincoln arts community by embarking on various initiatives. In January, they launched an online shop at rh-d-nebraska.square.site, expanding their reach and accessibility to art enthusiasts beyond their physical location.

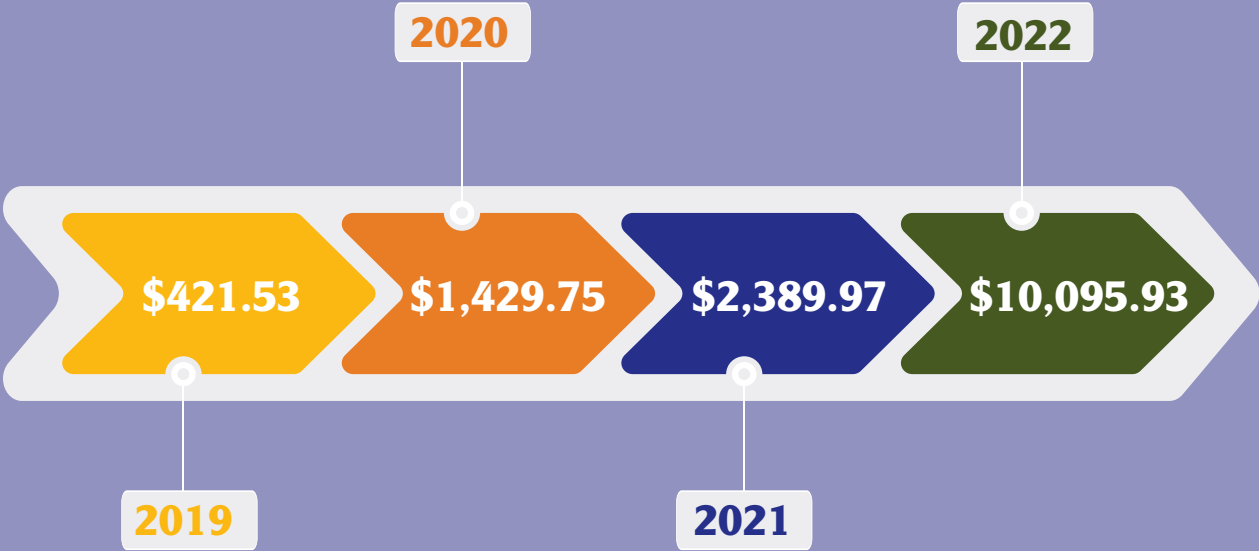
With the easing of COVID-19 restrictions in April 2022, LYS seized the opportunity to launch a soft opening for art shows held at their own studios. Throughout the year, numerous LYS artists showcased their exceptional artwork each month at these highly anticipated events. Notably, artist Peyton S. achieved a remarkable feat by setting a record during a solo show, generating over \$1,000 in sales in a single night. Additionally, Jessica R., another talented LYS artist, garnered recognition for her work through coverage in the *Lincoln Journal Star* in August.

In May 2022, LYS actively participated in Give to Lincoln Day, a prominent annual fundraising event in the community. This event encourages individuals, businesses, and organizations to contribute to local nonprofits and support their endeavors. LYS achieved a significant milestone during this event, raising a remarkable \$10,000 and setting a new studio record. The money raised during Give to Lincoln Day, combined with funds granted from RHD, enabled LYS to fulfill their longstanding aspiration of installing a wheelchair lift and implementing other ADA-compliant amenities. These improvements confirm the studio remains a safe and inclusive space for everyone in the community.

LYS’s commitment to community engagement continued throughout 2022. In June, their artists actively participated in the Lincoln Arts Festival, showcasing their talents and contributing to the local arts scene. Furthermore, in November, LYS hosted their 11th annual Thanksgiving Dinner, a heartwarming event that brought together over 50 people. LYS employees organized a potluck, creating a warm and inviting atmosphere where everyone could enjoy a shared meal.

With their unwavering dedication to fostering creativity and community involvement, Live Yes Studios continue to thrive as a pillar of the Lincoln arts community, providing a platform for individuals with intellectual and developmental disabilities to express themselves and contribute their unique perspectives to the world of art. Live Yes Studios’ remarkable success in 2022 exemplifies RHD’s commitment to creating a strong sense of community for individuals with IDD, allowing them to cultivate meaningful bonds within their arts communities.

Give to Lincoln Day Fundraising:



Imagine That!



Imagine That! is a thriving community of artists with intellectual and developmental disabilities, dedicated to promoting creativity and personal growth. Based in Kansas City, MO, this innovative creative arts studio empowers individuals of all abilities to explore their artistic potential and discover unique forms of self-expression.

In 2022, Imagine That! artists received well-deserved recognition within the local art scene. Austin Dearth, a talented artist from the community, had the honor of showcasing his artwork on two billboards in the Crossroads Arts District, thanks to the support of the [**Charlotte Street Arts Foundation**](#). Austin's participation in the Site Three show at H&R Block Artspace further highlighted his artistic achievements.

The artistic endeavors of other Imagine That! members were also celebrated throughout the year. In March, Rickey Moss, Austin Dearth, and Erin Aguilar participated in "Songs, Systems & Structures" held at Troost Gardens, a significant event that brought together artists from the Kansas City area. An inspiring showcase called "Body Talk" featured artwork by Lee Lang at Troost in October. Donald Pruitt, another talented artist from Imagine That!, featured his artwork in "Sweeping Chimney through the Mouth of the Earth," hosted by the Charlotte Street Foundation in April.

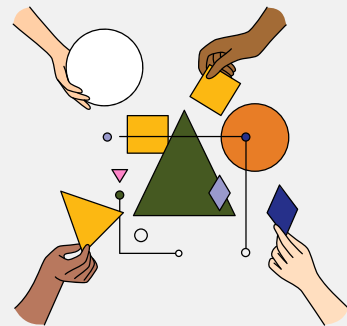
Beyond Kansas City, Imagine That! artists had the opportunity to share their work with audiences in Chicago, IL. Lee Lang and Michael Rasco's captivating pieces were displayed at the Chicago MidWest Arts Fair in September, while Jeremy Myers, Michael Rasco, and Brandon Aspenlinder participated in "Face in the Crowd" at Circle Gallery in October.

These accomplishments not only highlight the exceptional talent within the Imagine That! community but also demonstrate RHD's belief in the power of artistic expression to bridge communities and foster inclusivity. By showcasing their work at prestigious events and galleries, Imagine That! artists contribute to the vibrant arts scenes, leaving a lasting impact on the communities they touch .



IDEATE

RHD IDEATE is an inclusive employment program committed to providing clinically guided support to individuals facing barriers to obtaining and sustaining earning opportunities. IDEATE's mission is to offer personalized pathways to both competitive and self-employed careers by utilizing technology and community engagement.



IDEATE has made remarkable strides in demonstrating how technology can promote and enhance inclusivity. In collaboration with Arcadia University and Philly eSports during January and February of 2022, the program organized sessions where students, staff, and others explored the impact of technology and game play on disability stigma, social isolation, and inclusion. IDEATE program participants attended eSports sessions and shared their experiences alongside their non-disabled peers, promoting a sense of community and mutual understanding.

This collaboration culminated in a panel discussion, co-hosted by Comcast, during Philly Tech Week in May 2022. All agreed that the study, held at Comcast LIFT Labs, led to increased inclusion, teamwork, and a reduction in disability stigma. The panel also highlighted the need for ongoing assessments, formal criteria for inclusion and teamwork, clarity on time requirements, team size considerations, and increased diversity in eSports teams. As a result, LIFT Labs agreed to facilitate further exploration of these topics by connecting RHD and Arcadia to Comcast Accessibility and Spectacor, the Comcast eSports group.

In 2022, IDEATE fostered a sense of community, promoted understanding, and initiated discussions about diversity. Through personalized pathways to careers and the utilization of technology, IDEATE is breaking down barriers and paving the way for a more inclusive future.

Center for Creative Works

Center for Creative Works (CCW) supports individuals with intellectual and developmental disabilities through a day arts program and vocational training, facilitating creativity, skills development, and personal growth. In 2022, the CCW community experienced a significant milestone. Their new location in Philadelphia's Kensington neighborhood opened in March, joining their longstanding studio in Wynnewood, PA. Following the easing of COVID-19 restrictions, nearly all the artists were able to return to both CCW studios for the first time since the beginning of the pandemic. Additionally, CCW welcomed seven new artists in Wynnewood and 12 new artists in Philadelphia.

Throughout 2022, CCW artists made invaluable contributions to their local art communities and beyond.

- Doug Tan, Allen Yu, Cindy Gosselin, Clyde Henry, and Paige Donovan displayed their works at the 2022 Outsider Arts Fair in New York, NY, in March.
- Mary T. Bevlock's solo exhibition, "I Love Tony Danza," also served as a release party for her book "Portraits I Made in the Virus: My Zoom Pals" at the Summertime Gallery in Brooklyn, NY, in May. During the event, Mary sold her art, signed books, and created portraits.
- From July to September 2022, Mary T. Bevlock and David Schmuckler exhibited their works at "Everyday Heroes," a juried exhibition at Circle Contemporary Gallery in Chicago, IL.
- Eric Stewart was featured in a September-October 2022 group exhibition of local artists at Art of Kings Oaks in Newtown, PA.
- Owen Ahearn-Browning, Timothy O'Donovan, and David Schmuckler's three-person, "Character Studies," opened in October at Arcadia University in Glenside, PA. They also performed at a special event in Arcadia's auditorium.

In 2022, CCW artists achieved remarkable feats that left a profound impact. These accomplishments not only showcased their talents, but also strengthened the sense of community through their meaningful interaction and participation with other artists and peers.



NEPA



A group of IDD programs in Northeastern PA (NEPA) gave new meaning to the idea of community in 2022. RHD Lifesharing and GROWTH (Gaining Respect & Opportunities with Teaching and Hope) have been working together since 2017, collaborating to help participants live their best possible lives. Lifesharing offers community-based residential services, unlicensed home and community habilitation, and respite services for people with intellectual and developmental disabilities and/or autism. GROWTH, a Community Participation Supports (CPS) program, is non-facility based and provides the opportunity for individuals to achieve their goals for a more integrated life through a variety of locations within the community.

The bond between the two programs and their staff is truly unique. They frequently join forces by placing participants with host families through the Lifesharing program; then GROWTH connects them and their families with enriching day activities. As a result, the two programs essentially bundle their services, allowing them to focus on establishing and sustaining natural support networks. Moreover, Lifesharing has been instrumental in providing developmental opportunities for GROWTH staff members, including full CPR certification.

To ensure the utmost attention to the quality of care and services provided to their participants, GROWTH established regular case discussion meetings in 2022. These meetings serve as a platform for open and fluid communication, ensuring the participants receive comprehensive support from both programs. GROWTH has extended this collaborative approach by holding similar meetings with other regional programs: Evergreen, Mainstay United, and BLOOM.

The outcomes of these joint initiatives are remarkable. Participants have received accolades from county organizations, recognizing the strides they have made in self-advocacy. Such recognition is a direct result of the appropriate home placements facilitated by Lifesharing and the exceptional community support provided by GROWTH. One inspiring example is David, a participant who is blind. Through the combined efforts of Lifesharing and GROWTH, David has thrived, forming an unbreakable bond with his Lifesharing provider and increasing his participation in GROWTH from three to five days a week.

One event that truly reflects the ability of these programs to create a sense of community is the "Trunk or Treat" event held by the staff last Halloween. Staff members dressed up, decorated their cars, and distributed treats to the participants. Notably, students from a local children's dance school also took part in the festivities, illustrating how RHD programs can meaningfully engage all members of society.

Evergreen



RHD's Evergreen, a community-based program located in Lehigh Valley, PA, provides support and assistance to adults with intellectual disability disorders and neurobiological disabilities. On May 18, 2022, local friends and family gathered to celebrate a remarkable individual named Alex, a 34-year-old resident at Evergreen. Alex was honored with the prestigious 2022 One Step Forward Celebration Award, presented by The Arc of Lehigh and Northampton Counties. This organization is committed to creating a more inclusive and accessible future for individuals with intellectual and developmental disabilities throughout the Lehigh Valley.

Nominated by a former Evergreen regulatory trainer who had worked closely with him, Alex's journey stood out among the nominees. The trainer witnessed firsthand the tremendous progress and positive changes Alex had made, meeting all the criteria for the esteemed accolade. Alex currently works at Perkins Restaurant five days a week, enjoys visiting the local community center, and can travel by himself via Uber. He has adopted a healthier lifestyle and lost a significant amount of weight.



Alex was proud, excited, and honored to receive the One Step Forward Award. It is a testament to all the work he's done to improve himself and reach his life goals. Equally important is the unwavering support provided by the staff at Evergreen, who have been instrumental in Alex's journey toward personal growth and success. Evergreen, along with organizations like The Arc of Lehigh and Northampton Counties, plays a vital role in creating a supportive environment that celebrates the achievements of individuals like Alex, inspiring others to take their own steps forward. The recognition and celebration of Alex's achievements highlight RHD's dedication to the power of community support in facilitating personal growth and success for individuals with intellectual and developmental disabilities.

Philly Pours

Now in its seventh year, Philly Pours, our premier Philadelphia food and beverage fundraiser, dazzled guests with a circus-themed evening. Philly Pours was held on June 13, 2022, and took place at City Winery for the first time. The event was emceed by Philly’s own Patty Jackson of WDAS-FM. Guests enjoyed a magic show from Christophe Fox and caricatures from Emmy-nominated cartoonist, Bruce Blitz. The annual food and beverage fundraiser raised over \$45,000 to benefit RHD’s programs.

PHILLY POURS 2022 SPONSORS

Presenting Sponsor

Canon Solutions America

Sommelier

Willis Towers Watson

Vintner

Netsmart

Cuisine

Bowles 23 Foundation

Friedman LLP

Holman Automotive Group, Inc.

Horizon Health Care Consultants

JDB Service Group, Inc.

Schnader Harrison Segal & Lewis LLP &

Jo Bennett

Truist

United Concordia

Friend

Arlington Heritage Group, Inc.

Craft

The Children’s Hospital of Philadelphia

Fulcrum Pharmacy Management, Inc.

Lighthouse Abstract, Ltd.

GIFTS-IN-KIND

Borgata Hotel Casino & Spa

CDW

Charity Booster, Inc.

Crayola Experience

Dalessandro’s Steaks

Dave & Busters

Douglass Fudge

John’s Water Ice

Johnson’s Popcorn

Just Born

Lehigh Valley Iron Pigs

Luna Loft On Main

Mack’s Pizza

Met-Ed

Mike’s BBQ

Morey’s Piers & Beachfront Waterparks

Painting with a Twist

Philadelphia Eagles

Philadelphia Flyers

Philadelphia Museum of Art

Philadelphia Union

Philadelphia’s Magic Gardens

Pirates Of Wildwood

Sam’s Pizza Wildwood

Shriver’s Salt Water Taffy

Stanley’s Hardware, Inc.

Tavern at the Sun Inn

World Cafe Live

Yards Brewing



Main Line Wine Gala

This year’s Main Line Wine Gala, “Sharing Joy”, was held on September 21, 2022, on the outdoor grounds of Appleford Estates in Villanova, PA. RHD’s Main Line Wine Gala showcases the world’s most exclusive winemakers in an event that benefits RHD’s innovations in human services. This year’s event featured Bob Knebel of Rombauer Vineyards and Winery. Beneficiaries included The Center for Creative Works, Returning Citizens, IBHS, and future RHD initiatives that will impact the communities we serve. The event raised over \$110,000. To learn more about the Main Line Wine Gala **visit www.mainlinewinegala.org**.

MAIN LINE WINE GALA 2022 SPONSORS

Presenting Sponsor

Roffman Miller

First Growth

Schnader Harrison Segal & Lewis LLP & Jo Bennett

Grand Vin

PCS

WSFS Bank

Vineyard

Buchanan Ingersoll & Rooney PC

Comcast Business

Delta-T Group, Inc.

Karpiak Dupee Investment Group

TriBen Insurance Solutions, Inc.

Bertram Wolfson

GIFTS-IN-KIND

Karin Annerhed-Harris

Artist Kim

Artist Susan

Arthiteqt Salon & Gallery

Jo Bennett

Torrina Bennett-Michael

Brown Sugar Nail Spa

Nakeisha Burnett

Center For Creative Works

Di Bruno Bros.

John Finnand

Frank Gattuso

Clyde Henry

Cory Jenkins

Scott Karpiak

Le Reve Rittenhouse Spa

Winemaker

Bowles 23 Foundation

Horizon Health Care Consultants

PeopleShare

Porter & Curtis LLC

Sands Chrysler Jeep Dodge

Temple University Health System

Willis Towers Watson

Cocktail

Truist



Terry Soulé

Brandon Spicer-Crawley

Eric Stewart

Lydia Thompson

URBN US Retail LLC- Anthropologie

Villanova University

Vino Bambino Winery

WHYY

Yards Brewing

Allen Yu

Our Donors

We are pleased to recognize donors who supported RHD and its programs with a gift of \$100 or more between January 1st and December 31st, 2022. Each gift is greatly appreciated with every effort made to ensure this list’s accuracy. In the event of an error or omission, please contact Peg McCluskey at peg.mccluskey@rhd.org.

\$100,000+

Independence Blue Cross Foundation
The Philadelphia Foundation

\$25,000 - \$99,999

CVS HEALTH
Independence Foundation
University of Pennsylvania
URBN US Retail, LLC- Anthropologie

\$10,000 - \$24,999

Canon Solutions America
Margaret Darby
Paulette Greenwell, CFA
The Larsen Foundation
Philadelphia Aids Thrift
Pocono Mountains United Way
Truist
Utility Emergency Services Fund

\$5,000 - \$9,999

Karin & Vince Annerhed-Harris
BNY Mellon Charitable Trusts
Leonard P. Barcousky
Jo Bennett
CDW
Firespring Foundation
Mark & Marietta Frombach
Home Appetit
Independence Blue Cross

Just Born
Maria Dickinson Logan Trust
The Magpie Foundation
Middle Child, LLC
PCS
St. Joe Community Foundation
Schnader Harrison Segal & Lewis, LLP
Frank van Lint & Heidi Siegel
Vital Strategies
WSFS Bank
WSFS Cares Foundation
Willis Towers Watson
Roland & Sharon Yoshida

\$2,500 - \$4,999

Akron Community Foundation
Bowles 23 Foundation
Buchanan Ingersoll & Rooney PC
CASA Soccer League
Comcast Business
Delta-T Group, Inc.
Horizon Health Care Consultants
Lincoln Community Foundation, Inc.
Netsmart
PPL Foundation
Scott Karpiak
Leslie Jones Sauer
Stonewall Sports - Philadelphia
TriBen Insurance Solutions, Inc.
Eileen Ward
Bertram Wolfson, Esq.

\$1,500 - \$2,499

The Benevity Community Impact Fund
Davey Davis
Friedman LLP
Marco Giordano
Holman Automotive Group, Inc.
James W. Howell
JDB Service Group, Inc.
Charles Lynch
Main Line Unitarian Church
Chris Peeples
PeopleShare
Porter & Curtis, LLC
Theresa Ruiz
Sands Chrysler Jeep Dodge
Specialty Claims Services, Inc.
Temple University Health System
United Concordia
Vanguard Charitable

\$1,000 - \$1,499

AmazonSmile Foundation
Arbour Square of Harleysville
Arlington Heritage Group, Inc.
Susanna Berkouwer
Anthony DeLuca
Larry & Maryann Genuardi
Gum Creek Farms, Inc.
Harleysville Bank
Infinite Body Piercing
Samuel C. Lansky

Luna Bella, LLC
Sean McGauley
Scott & Elizabeth McKay
Bernard Mennis
Michael & Julia Puchtler
Queer Candle Co.
Carla A. Schmidt
Schwab Charitable
Ryan Shanahan
Norman & Donna Windle
YourCause, LLC

\$500 - \$999

American Heart Association, Inc.
Diamond Anthony
Stephen Armstrong
Matthew Battin
John Benson
John Berardinelli
The Blackburn Giving Fund
Cake Life Bake Shop
The Children’s Hospital of Philadelphia
The Community Foundation of Western North Carolina, Inc.
JoAnn E. Connelly, MSW
Michael Cramer
Jocelyn DeGroot-Lutzner
Aylin Candan Erenguc
Robert Feinberg
Frank Gattuso, Esq.
Megan Gehrke
Rick & Sue Gettlin
Bernie & Peg Glavin
Andrea Jackson
Fulcrum Pharmacy Management, Inc.
The Home Depot
Hopeworx, Inc.
Lauren S. Hunter

Karen Kaminsky
Maria Kiernan
Samantha Krotzer
Tanya Leshko
Marvin F. Levine, MSW
Lighthouse Abstract, Ltd.
Lou Listerud
Marriott International, Inc.
Philadelphia Falcons Soccer Club
Pledgeling Foundation
Sylvia Ranieri
Reformed Church of Bushkill
Renaissance Charitable Foundation
David & Melanie Richardson
St. Rita’s Parish
David Schultheisz
Mina Shakarshy
Nicholas Torres
John Tucci
Paul & Linda Wetzel
Vanessa Williams
Daniel M. Yost

\$100 - \$499

A Best Vending, Inc.
Andrea Abrams Herbert
Maya B. Afilalo
Sarah D. Anton
Attic Brewing Company
Haley Bailey
Elizabeth Balcom
Lori Bartol
Robert Beasley
Wylie Belasik
Melissa Berkowitz
Eldron C. Blackwell
Nina M. Blomfield

John & Caroline Bludworth
Anna N. Boffice
Billy Boyer
Elizabeth A. Boyle
Michael Bridges
Marguerite Brock
Teresa Brogan
Rita Brouwer-Ancher
Nerida J. Brownlee
Michele Burgers
Diana Campeggio
Owen Camuso
Mae Carlson
James Cassar
Taylor A. Cawley
Deanna Cerwin
Christine Chacko
Margaret Chambers
Charities Aid Foundation of America (CAF)
Danny Chau
Simon Cherian
Church Women United of Monroe County
Peyton Cleary
Birchard Clothier
Meredith Cobb
Leia Cohen
Brendan Conlin
Sabrina Cook
Jeffrey Cooper
Nicole Cowan
Tonya Cross
Simone Darkoa-Larbi
Haben Debessay
Charlotte Devilliers
Elliot Dill
Marissa Donohue
Linda Donovan-Magdamo

Holly E. Dorrington
Allison N. Dotts
Katherine Egan
Moriah Ellig
Tucker Farms, LLC
Emily Flam
Stacey Flamer
Robert Fox
Sylvia Fox
Clary-Glenn Funeral Homes, Inc. & Crematory
Christopher Gage
LaQuesha Garland
Mlguel Gaspar
Karen Gilligan
Kathey Godfrey
Francis Gress
Samantha Haas
Jennifer Hare
Joyce Harris
Daniel & Martha Hayes
Heartland Weight Loss
Mary Hewey
Laura J. Hill
June Hodges
Seth Hoffman
Liam Hogan
Tom & Vallie Hogan
Brendan Hogg
Kathy Howard & Daryl Mecklem
Patricia Howard
Lindsey Huster
Maria Hutnick
Rachel Insolia
Kaitlin Irvine
Dean Jackson
Roxanne Jeffries-Baxter
Nicholas Jonczak

Britteny Joseph
David F. Jury
Abigail Kallin
Andrew Kelly
Jennie Kratz
Colleen Kropp
Ladies Auxiliary of VFW Post 509
Bailey Landis
The Lehigh Valley Charter High School for the Arts
Alyssa Levitz
Lewis Center for the Arts
Angela M. Licata
Jody Loreaux
Patrick Mahoney
Kelsey Malone
Manayunk Development Corporation
Sharon Mango
Emily Marino
Marshall McClenon
Alexis McDonald
Natalie T. McGarvey
Patricia McGinley, MS, RN
Jillian McGonigle
Denise McKnight
Diane A. Menio, MSW
Laura Michaelis
Stephen P. Morse
Michelle Mulik
Adrian Mulroney
Charlotte A. Munn-Wood
Ezra Nepon
Peter Neuschul
Toshiro Newsum
Janet Novack
Nicole M. Nucci
Mary O'Donnell
Patrick Oleskey

Suzana Olmos
Original 13 Ciderworks
P & P Heating & Cooling
Kaela Parkhouse
Megan Paszko & Susan Daugherty
Kayur Patel
Olivia Perfetti
Brian Perry
Christina Peteraf
Julia Peters
Pfizer, Inc.
Fisher Pharmacy
Kendall Pletcher
Pocono Mountains Council of Government
Krugwan A. Pollard
Stephanie Pompey
Brenda & Tom Poston
Presbyterian Women
The Progressive Insurance Foundation
Pamela & Vincent Quinn
Quota Path
Kathleen E. Racculia
Mx Rami George
Julie Rasmussen
Yogi Rathore
Donald Reese
Melissa Revell
Andrew Rigefsky
Diane S. Rivers
Brett E. Robert
Amara Rockar
Jessica Rossi
Thomas F. Rossi
Zachary Rubinich
Luke Ryan
Clementine Salon
Lauren Salvati

Adair Sanchez
Bianca Santalla
James B. Sardella
Rebecca Sax
Swain School
Hannah Schwarzman
Molly Seltzer
Jadyn Sharber
Cynthia Shaw
Neil & Cheryl Shusterman
Michael Simpson
Mandy D. Smith
Lynna Stancato
Rachel Stark
Emily Stein
S.A. Steinberg
Julia Stone
Sunnyside Dispensary
Mary Topi
Union United Church of Christ
United Way of The Greater Lehigh Valley, Inc.
Joseph R. Veltri
Heather L. Watt
Rebecca M. Weber
Sophia Weinstein
Michael West
Riley White
Danielle Williams
Heather Wismer
Karin Wittenborg
Dan Woltz
Women's Club of Upper Merion

IN MEMORY OF

Carol Abrams
Andrea Abrams Herbert
Mary Cincotta
Anthony Defazio
Brittany Curless
Michelle Mulik
Tim Gwin
Gerald L. Martincich, DDS, PA
Joseph Keer
Robert A. Griffiths, Esq.
Monica Fern Lehman
Holly E. Dorrington
Lina Patel
James "Rayne" McKay
Clementine Salon
Jeffrey Cooper
Sarah Denlinger
Steve Leaser
Laura Michaelis
Chris Peeples
Jeanne Smith
Swain School
Bo Mellado
Brenda & Tom Poston
Stephen Anthony Molettieri
Carol & Ron Moore
Meekka Morris
Billy Boyer
Alexandria Pollard
Carol Durkee
Lewis Center for the Arts

Alice Catherine Pollard

Mrs. Krurwan A. Pollard
Linda Lee Richardson
Robert Beasley
John & Caroline Bludworth
Sue Carter
Mary R. Evans
Mark & Martha Fricks
Kathey Godfrey
Daniel and Martha Hayes
Tammie B. King
Corinne & Gordon Porter
Ronald & Marsha Pugh
Tucker Farms, LLC
Richard Rasmussen
Julie Rasmussen

IN HONOR OF

Del West
Karen Layfield
Donald Moulton
Karin Wittenborg
Elizabeth Sprenkle
Wendy Quam
Emily Nichols
Patrick Oleskey
Heidi & Jesse Nafis Wedding
Alyssa Levitz
Kalev Kasper
Tiiu Lutter
Rebecca Fisher
Sheldon Steinberg
Paul W. Wetzel, VMD

WAYS TO GIVE

Your Support Makes a Difference

There are a number of convenient ways for you to support RHD's mission. Gifts received may be unrestricted or designated to support a specific program or service line. Donations can be made securely online through RHD's website, by check, cash or stock. For more details about all the ways you can give, visit www.rhd.org.

Annual Giving

Gifts of Stock

Matching Gifts

Tributes and Memorial Gifts

Planned Giving

In-Kind Gifts

Adopt-a-Program

Attend Special Events

PA Educational Improvement Tax Credit (EITC)

Corporate, Foundation and Organization Giving

Greater Philadelphia and Southeastern New Jersey: #838



Visit www.rhd.org/ways-to-donate or scan the QR code to see all the ways you can give.



**TOGETHER, WE'RE BETTER.
TOGETHER, WE'RE RHD.**

WWW.RHD.ORG